



Natural Ventilation Control Solutions

Standalone Controller Range



Manual Positioning Unit

- ❖ Low voltage 24V AC/DC operation, 0-10VDC signal
- ❖ Louvres/Dampers can be manually positioned to one of six positions at anytime, including fully open and fully closed.
- ❖ Optional auto close energy saving feature.
- ❖ LED feedback display of louvre/damper position selected.
- ❖ Wall/Control panel mountable.
- ❖ Optional rain sensor to automatically close louvres/dampers where necessary.
- ❖ Can operate multiple Louvres/Dampers depending on power supply unit rating.

Standard Power Supply Unit sizes

- ❖ PSU8 up to 8 Actuators
 - ❖ PSU30 up to 30 Actuators
- Other Sizes Available on Request



“ Our iSC™ range of intelligent sensors has been developed in house, by our control engineers ”

Standalone Controllers

C: Controller, **T:** Temperature, **C:** Carbon Dioxide,
m: Manual Push Buttons, **I:** CO₂ Indication

CTCml:

Temperature and CO₂ Sensor Controller with manual override and CO₂ Level Indicator



CT:

Temperature Room Controller

CTC:

Temperature and CO₂ Room Controller

CTm:

Temperature Room Controller with Manual Override

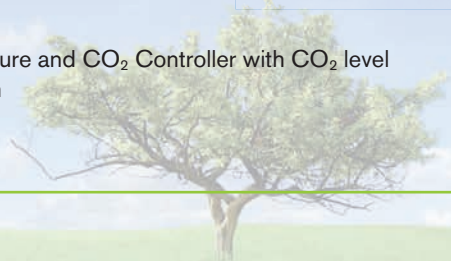
CTCm:

Temperature Room and CO₂ Controller with Manual Override



CTCI:

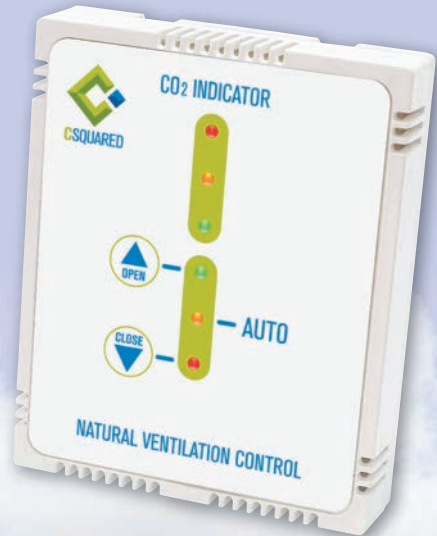
Temperature and CO₂ Controller with CO₂ level indication



Standalone Controllers

Our unique range of standalone controllers can control Ventilation Dampers or Automated Windows together with localised Heating, via on board, Temperature or Optional CO₂ Sensors to suit the requirements of each specific application. These Controllers can be linked to either a time clock or receive a time signal from a BMS to activate the optional Night Cooling programme (Night Cooling only available with the Manual Override options).

- ◆ 0/10 VDC Heating Signal
- ◆ 0/10 VDC Cooling/Ventilation Signal
- ◆ Frost Protection
- ◆ Room Temp Set Point Adjustable 19°C to 26°C
- ◆ Room CO₂ Set Point Adjustable 900ppm to 1600ppm
- ◆ Pre-wireable base and plug-on fascia plate assists in easy, time saving installation



“ Our room sensor range has been specifically designed for ease of use by the client ”

Standalone Controllers

Temperature Control:-

The room set point for the control of the Ventilation Dampers/Automated Windows can be adjusted in 1°C increments between 21°C and 26°C with a seasonal change over and a night cooling option if a time clock or BMS time signal is available. Localised Heating can also be controlled and is set 2°C below the room set point.

Manual Override (optional):-

Each room device has manual override capabilities which give the end user control of the ventilation strategy to suit the room application. The device consists of two push buttons and three LED lights, the push buttons enable the end user to open or close the ventilation as required, the LED's give an indication that the system has either been overridden or is in Auto mode. Once the system has been overridden it will stay in that mode for 30 minutes, after this time the system will revert back to Auto mode.

CO₂ Indication (optional):-

Each room device can also be fitted with a further 3 LED's to identify the level of CO₂ within the space; these are green, amber and red. With green being healthy and red being high levels of CO₂ ppm's.

Night Cooling:-

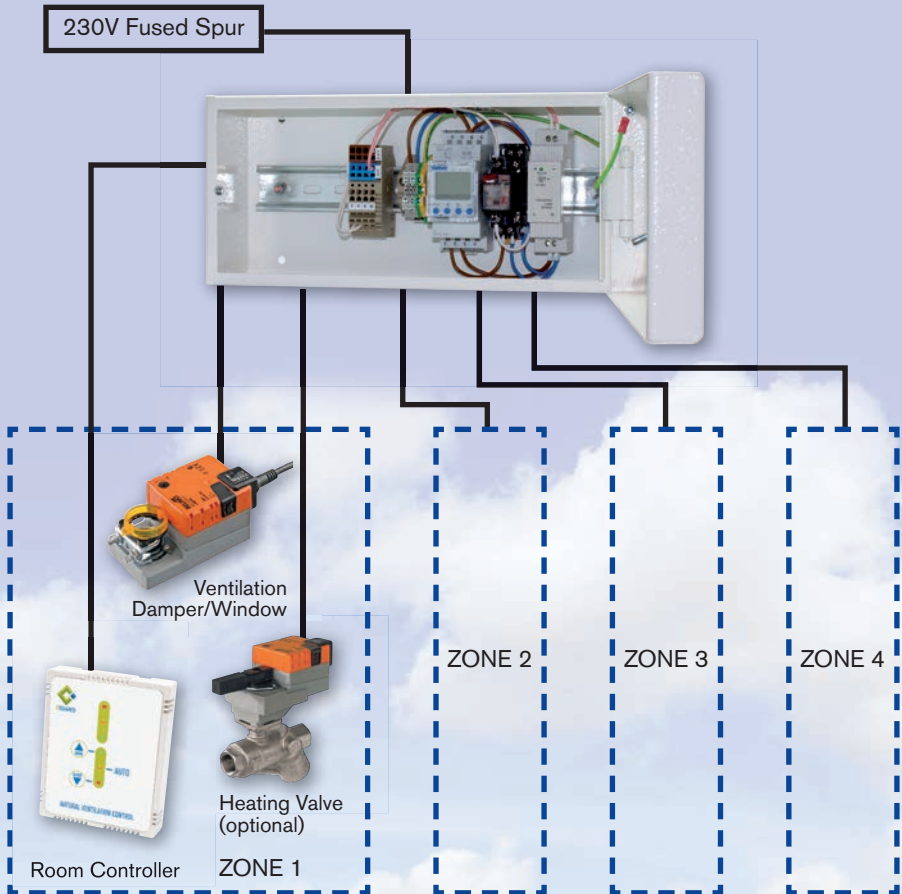
To enable the Night Cooling pre-programmed software, the device needs to be in (Night Mode) and the night cooling enabled, this then cools the building to just below the room set point. When the Time Switch is in (Night Mode), by holding down the open/close buttons this will enable this mode to be turned on/off. (Indicated by the Auto LED ON or OFF).

Summer/Winter:

The Summer set point can be selected to be below the Winter set point, this is 2°C below that set value on the dip switches. To select Summer mode, in (Day Mode) hold both the open/close buttons down for 5 seconds, lights flash, push the open button for summer mode, or close button for winter mode.



Four Zone Power Supply Unit (PSU) + Time Switch (TS) Interface Unit

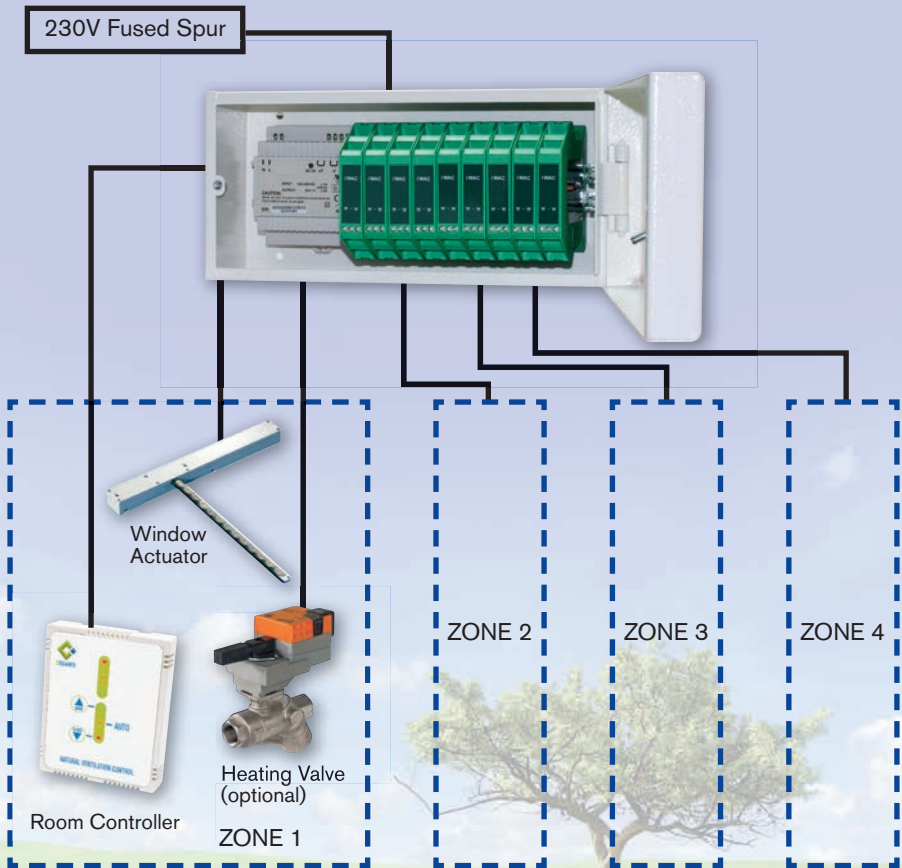


This interface unit comprises of a power supply, coded terminals, frost protection feature, optional digital time switch and night cooling (operated by the time switch or external VFC)

Window Control

The Window Control Module contains a 24v DC Power Supply and an iWAC module per Window Actuator that controls via a 0/10 VDC positioning signal from a suitable controller. The WCM features an intelligent 'self stroking' operation and controls the 24v DC window actuator in steps to prevent noise disturbance to end users.

The Window Control Module allows only one window to operate at a time. This saves the expense and space in only needing a DC power supply rated for the largest actuator (maximum 3 Amp per controller) to be operated.

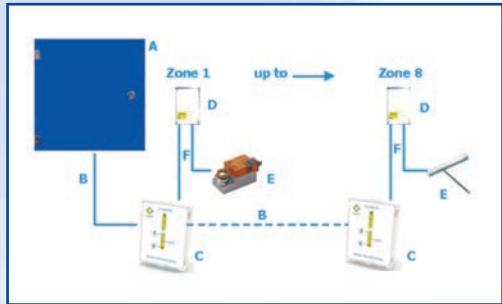
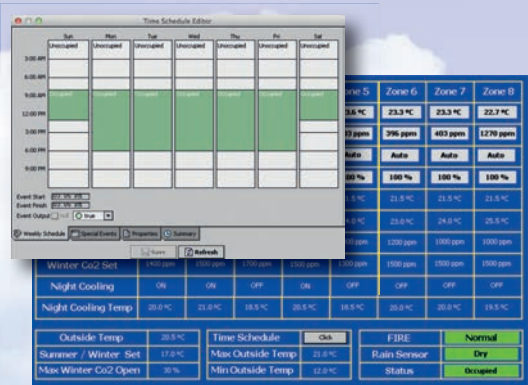


The All New NV8 Natural Ventilation Controls Package - As easy as ABC



SEE LIVE DEMO: <http://217.41.89.69:5445>
Username: Visitor
Password: Site123 (Case Sensitive)

- A: ONE** Control Panel
 - B: ONE** Pair of Cables
 - C: ONE** Combined Room Unit[#]
 - D: ONE** Power Supply[#]
 - E: ONE** Set of Louvres/Window[#]
 - F: ONE** Modular Wiring Install
 - G: ONE** Web Browser
 - H: ONE** Web Browser Page for Settings
 - I: ONE** Web Browser Page for Time Programs
 - J: ONE** Onboard Proven and Tested Software Protocol
 - K: ONE** Open Source BACnet Communication Protocol
 - L: ONE** BACnet over IP output
 - M: EIGHT** Zones
- [#] Per Zone



0844 809 2509



info@airtherm.co.uk | www.airtherm.co.uk